

Mommy Love Affair: Robin Goodfellow, the Mischievous Sprite



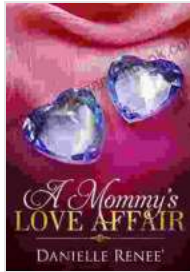
A Mommy's Love Affair by Robin Goodfellow

★★★★★ 5 out of 5

Language : English

File size : 1515 KB

Text-to-Speech : Enabled



Enhanced typesetting : Enabled
Word Wise : Enabled
Print length : 20 pages
Lending : Enabled
Screen Reader : Supported



Robin Goodfellow, also known as Puck, is a mischievous sprite from English folklore. He is often depicted as a mischievous and playful creature, but he can also be malicious and cruel. In Shakespeare's "A Midsummer Night's Dream," Robin Goodfellow is portrayed as a mischievous and playful sprite who helps the lovers Demetrius and Helena find true love. However, in other stories, Robin Goodfellow is depicted as a more malicious and cruel creature who enjoys playing tricks on people.

Robin Goodfellow is said to be the son of Oberon, the king of the fairies, and Titania, the queen of the fairies. He is often depicted as a mischievous and playful creature who loves to play tricks on people. He is also said to be a skilled dancer and musician. In some stories, Robin Goodfellow is said to be a helpful creature who helps people in need. However, in other stories, he is depicted as a more malicious and cruel creature who enjoys causing trouble.

Robin Goodfellow is a popular figure in English folklore and has been featured in many works of literature, art, and music. He is often depicted as a mischievous and playful creature, but he can also be malicious and cruel. Whether you love him or hate him, Robin Goodfellow is a fascinating and

complex character who has captured the imagination of people for centuries.

Robin Goodfellow in "A Midsummer Night's Dream"

In Shakespeare's "A Midsummer Night's Dream," Robin Goodfellow is portrayed as a mischievous and playful sprite who helps the lovers Demetrius and Helena find true love. He is also responsible for some of the play's most famous scenes, such as the scene in which he transforms Bottom into a donkey. Robin Goodfellow is a complex and fascinating character who adds a touch of magic and mischief to the play.

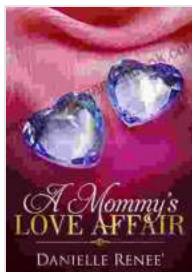
Robin Goodfellow is first introduced in the play as a mischievous sprite who loves to play tricks on people. He is responsible for the chaos that ensues when he transforms Bottom into a donkey. However, Robin Goodfellow also has a softer side. He is deeply in love with the fairy queen, Titania, and he is willing to do anything to make her happy. Robin Goodfellow is a complex and fascinating character who adds a touch of magic and mischief to the play.

Robin Goodfellow in Other Stories

In other stories, Robin Goodfellow is depicted as a more malicious and cruel creature. He is often said to be a mischievous sprite who enjoys playing tricks on people. He is also said to be a skilled dancer and musician. In some stories, Robin Goodfellow is said to be a helpful creature who helps people in need. However, in other stories, he is depicted as a more malicious and cruel creature who enjoys causing trouble.

Robin Goodfellow is a popular figure in English folklore and has been featured in many works of literature, art, and music. He is often depicted as

a mischievous and playful creature, but he can also be malicious and cruel. Whether you love him or hate him, Robin Goodfellow is a fascinating and complex character who has captured the imagination of people for centuries.



A Mommy's Love Affair by Robin Goodfellow

★★★★★ 5 out of 5

Language : English
File size : 1515 KB
Text-to-Speech : Enabled
Enhanced typesetting : Enabled
Word Wise : Enabled
Print length : 20 pages
Lending : Enabled
Screen Reader : Supported



PreTime Piano Jazz Blues Primer Level: A Comprehensive Guide to the Basics of Piano Jazz and Blues

The PreTime Piano Jazz Blues Primer Level is a comprehensive guide to the basics of piano jazz and blues. It is designed for beginners and...



Surviving and Thriving with the Self-Absorbed: A Comprehensive Guide

Interacting with self-absorbed individuals can be a challenging and emotionally draining experience. Their incessant focus on themselves, lack of empathy, and inability...